



In the heart of the  
Aden Adde Airport zone,  
Chelsea Village residents are secure,  
comfortable and connected.

Brought to you Enigma Alliance and the Chelsea Group



# highlights

08 SECURE COMFORTABLE  
ACCOMMODATION

I2 UN MOSS STANDARD  
CAMP SECURITY

I3 SECURE TRAVEL INTO TOWN

I4 CATERING, CONFERENCES  
& EVENTS

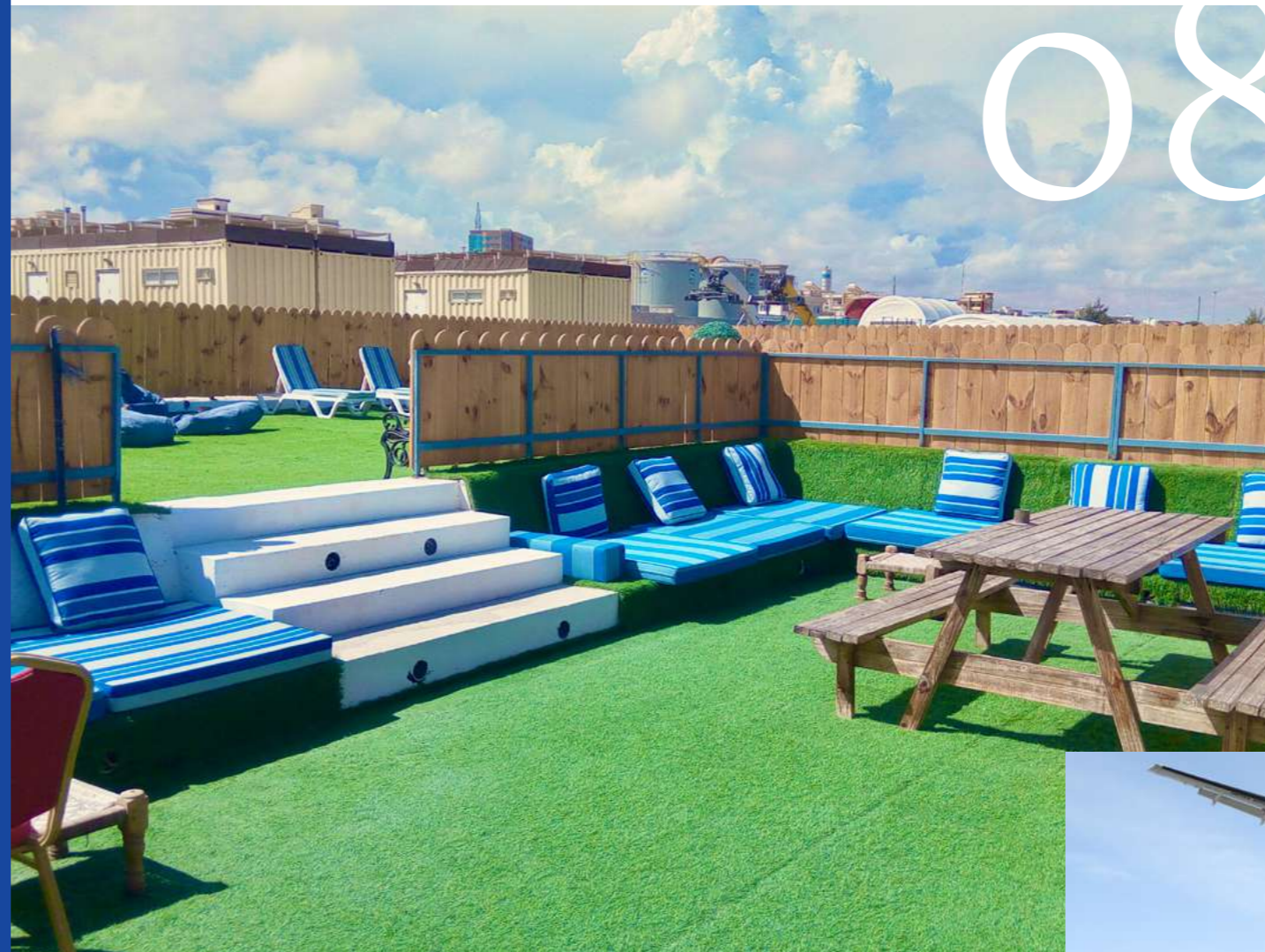
I5 AMENITIES:

- High Speed Internet
- Clean Drinking Water
- Always-On Power
- Recreation, Fitness  
& Wellbeing

I8 OFFICE SPACE

20 CONSTRUCTION

26 HOSPITAL ON SITE



## Welcome to Chelsea Village

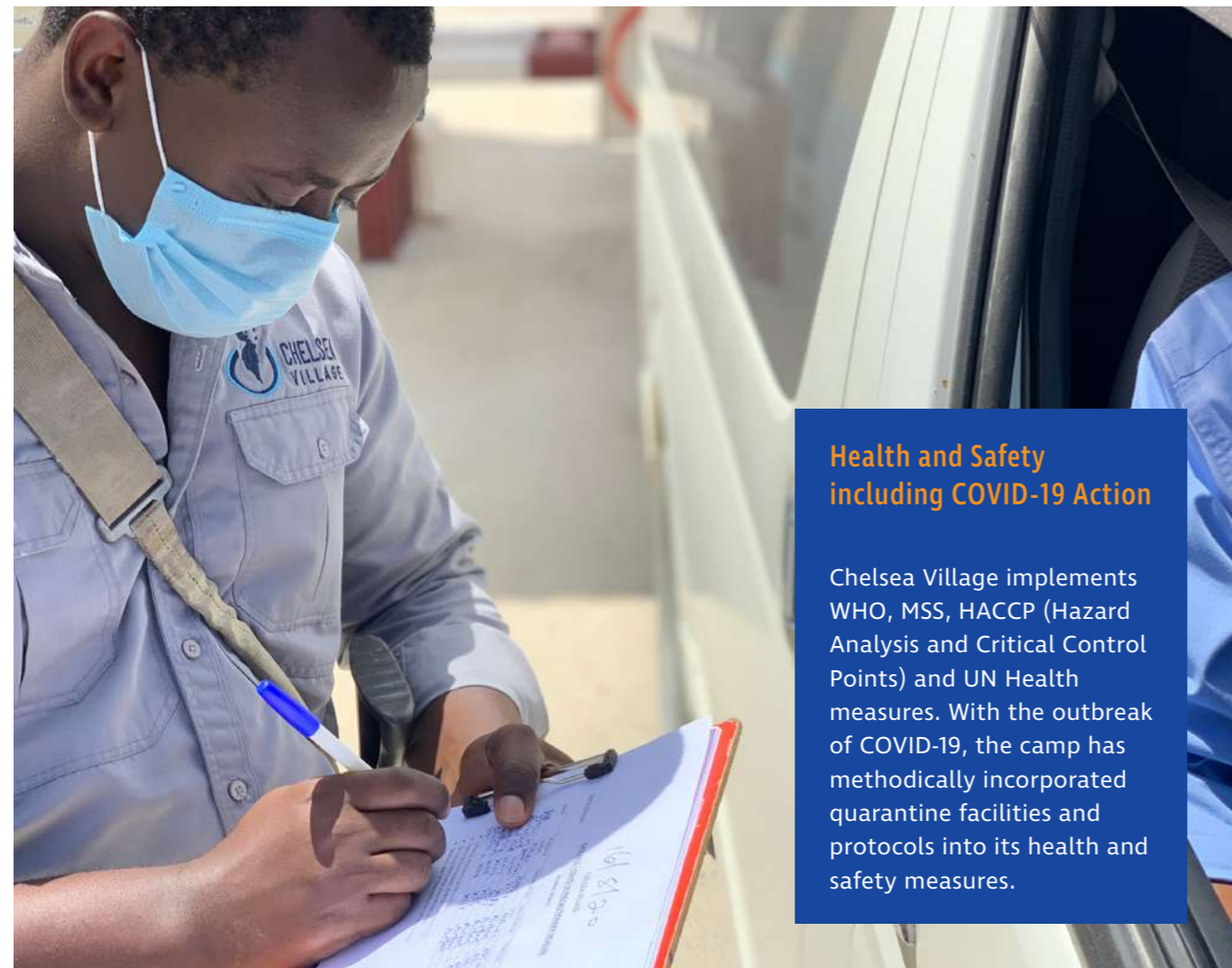
# About Chelsea Village



Located in the Aden Adde International Airport (AAIA) zone, Mogadishu, Chelsea Village was first established in 2015 to create a comfortable and secure home-from-home for an international community from the humanitarian, medical, governmental and development sectors, operating in Somalia.

From the moment our clients arrive in Mogadishu, they are met by one of our Chelsea Village team members together with a Hart Nationwide close protection officer and are escorted to the camp. For the arrival step by step process, please see page 28.

Today, Chelsea Village, which can host up to 163 guests, has earned a reputation for its uncompromising quality, cultural sensitivity and family-like atmosphere and is an influential networking hub for guests who become neighbours, friends and business partners.



## Health and Safety including COVID-19 Action

Chelsea Village implements WHO, MSS, HACCP (Hazard Analysis and Critical Control Points) and UN Health measures. With the outbreak of COVID-19, the camp has methodically incorporated quarantine facilities and protocols into its health and safety measures.



“The whole set up you have is excellent. Your reputation in country is incredibly high – and we can see precisely why.”

– CHRIS G

# Secure Comfortable Accommodation

Chelsea Village as well as UNDSS-approved overhead and side-blast protection in its high-end containerised NapCap accommodation units.



Designed in Australia and built to ISO standards, the container NapCap rooms were created by a team who have spent years working in dangerous and remote environments. Unique in their product field, each unit offers air conditioning but also insulation omitting noise, humidity or wind, ensuring our guests can sleep safely and peacefully.

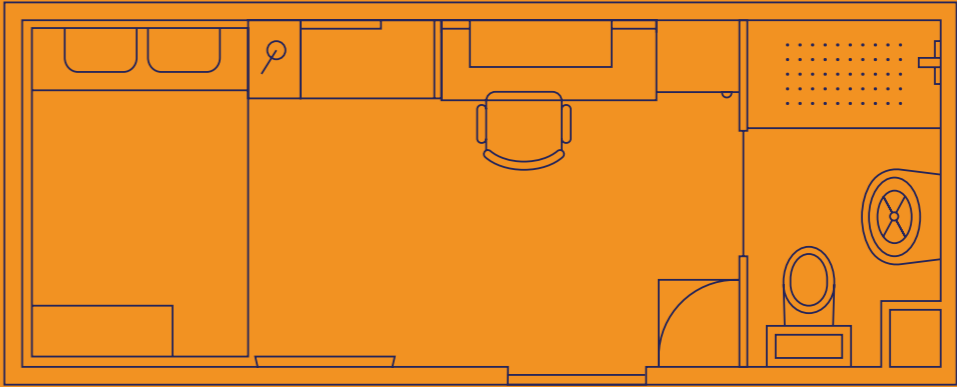
Attention to detail, ensures that the interior is comfortable and user friendly, maximising the space. From the high-end finishes to quality linen and towels, everything about a NapCap unit will make you feel at home. Guests can choose between Premium rooms or VIP suites.



## What You'll Find In Your Premium NapCap

Our standard NapCap is a 40-foot container, split into two living spaces each with en-suite shower room. Here's what your new home away from home includes:

- |  |  |                          |
|--|--|--------------------------|
| Double bed with two drawers and charging station | TV Cabinet (incl space for refrigerator & books) | Corner fridge            |
| Air conditioner                                  | Cushioned bench                                  | Drinking water dispenser |
| Bedside table                                    | Office chair                                     | Kettle                   |
| Writing desk with four drawers                   | Mirror   | Toilet                   |
| Wall shelf                                       | Hooks for clothes                                | Shower                   |
| Single wardrobe                                  | LCD TV (32 inches)                               | Washbasin                |



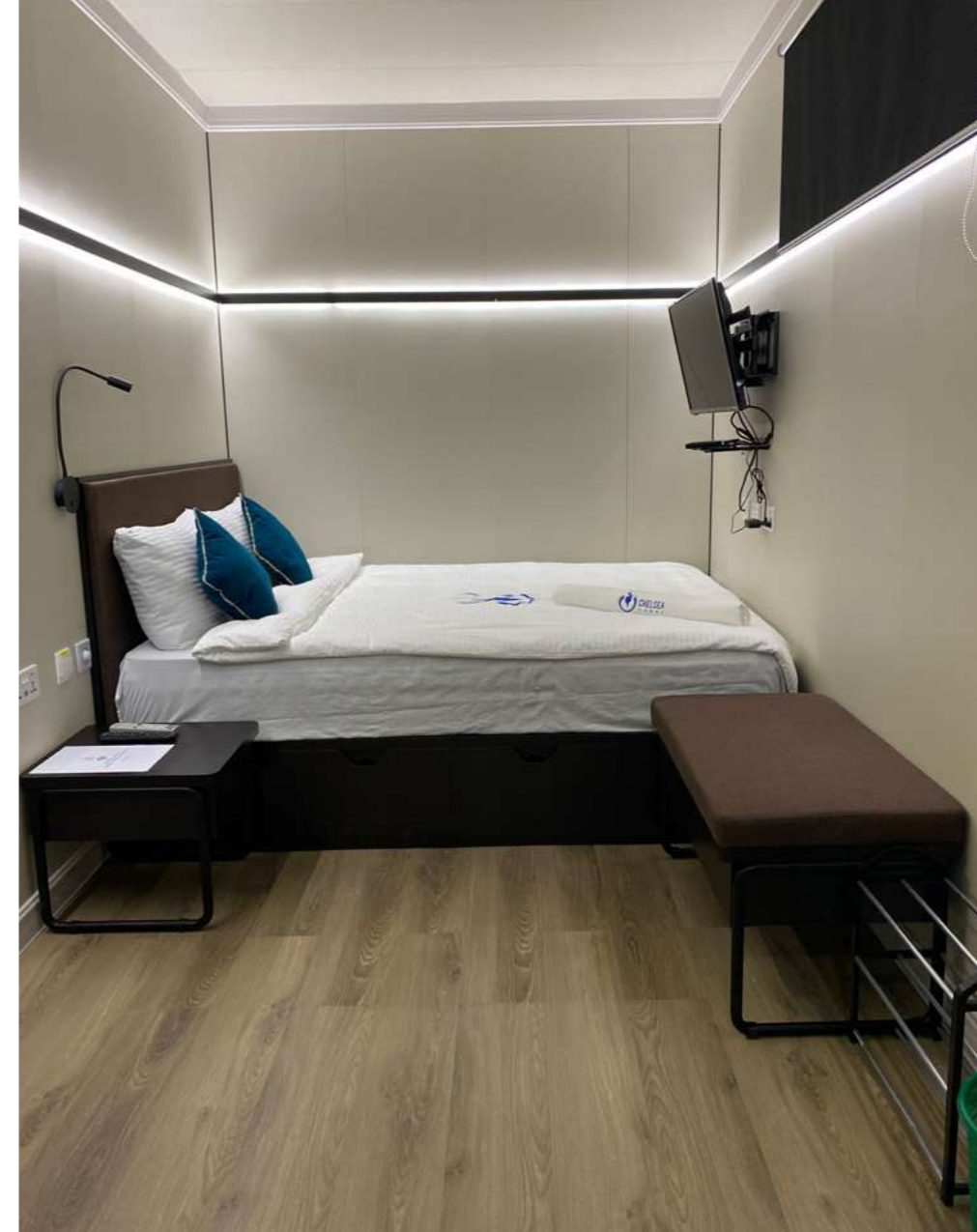
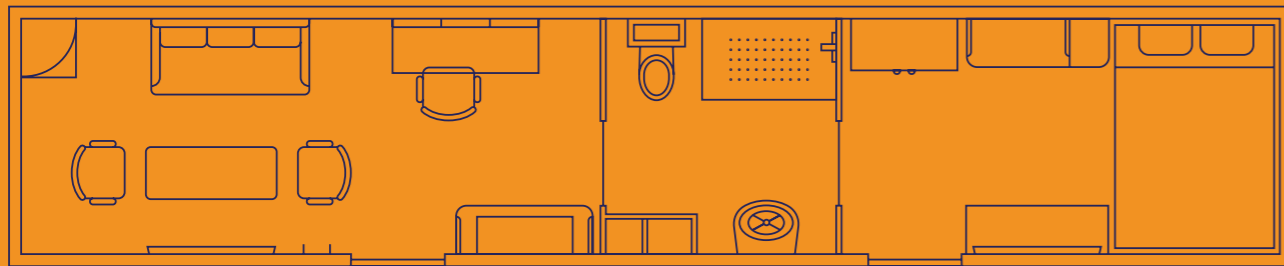
All water in bathroom is potable to WHO standards



# What You'll Find in Your VIP NapCap

Our VIP Suite is 40-foot, and includes a bedroom, larger en-suite bathroom, as well as a separate lounge and work area. It features two doors, for entry via the private lounge/working area (which has its own mini bar fridge and television) or via the living space.

- |   |  |   |
|---|--|---|
|  Queen bed with two self closing drawers                             |  AC unit                                    | <b>LOUNGE:</b>  |
|  32" LCD flat screen TV<br>BlueTooth sound system                    |  Fully equipped ensuite with fan exhaust    |  Separate sofa lounge and two chairs  |
|  Double Wardrobe   |  Multi controlled lighting                  |  Coffee table   |
|  Cushioned bench   |  Mood lighting with dimmer switch           |  Working desk & chair   |
|  Bed side table with charging station                                |  Hanging hooks for bags, coats or umbrellas |  43" LCD flat screen TV   |
|  Mini bar fridge, & coffee/tea preparation area with clean water tap |  |  Additional mini bar fridge, & coffee/tea preparation area with clean water tap |



"The security provided by the steel container rooms is the best and I sleep more soundly at Chelsea Village than elsewhere (but maybe that's their beds!)."

— LILY S



FIND OUT MORE ABOUT NAPCAP AT  
[www.napcap-living.com](http://www.napcap-living.com)

# UN MOSS Standard Camp Security

The only private camp in the area with a full blast-protection T-wall, Chelsea Village is secured by internationally recognised Chelsea Group company Hart Nationwide.

With headquarters at Chelsea Village, Hart Nationwide oversees the CCTV throughout the camp and manages the state-of-the-art electronic early warning system.

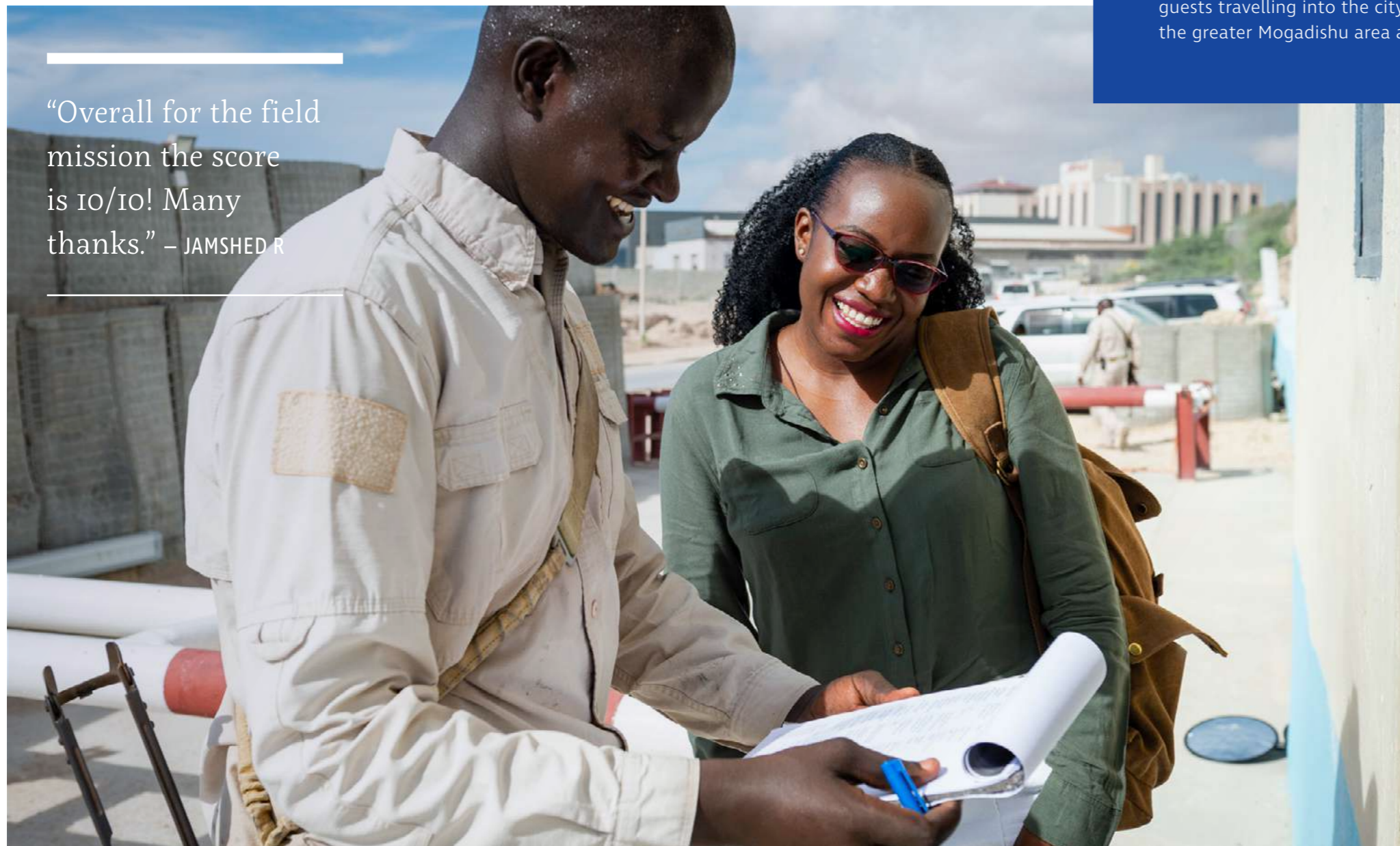
Gate control is of the highest standard and every visitor to the camp is pre-vetted. Feel free to introduce yourself to the Hart management team – you'll find their office next to Reception – and they will give you a brief on the security situation and the measures they have in place.

## Secure Travel into Town

Our skilled Hart Nationwide security management team is also able to provide mobile security escorts, as well as close protection officers to guests travelling into the city, on request. Hart Nationwide operates in the greater Mogadishu area and Somalia-wide.



“Overall for the field mission the score is 10/10! Many thanks.” – JAMSHED R



# Catering, Conferences and Events

Our team of multi-national, skilled chefs and catering staff take the culinary satisfaction of our guests to heart. Guests are free to make special requests. Catering, conferences and event expertise include:

- An all-inclusive, unlimited, three meals a day buffet
- A la carte options at 24-hour notice

- Catering for conferences, team building and events which include themed buffets or barbeques around the cabana or on the Chelsea Village roof terrace.

- Birthday cakes

Our catering team adhere to the strictest HACCP (Hazard Analysis and Critical Control Points) and UN Health measures.



---

“Superb food. Impressive under the circumstances.”

— DAVID B

---

## Clean Drinking Water



While staying with us there's no need for bottled water. Specialists in water purification, Water Cap's modular desalination plant ensures water security and conserves the local water table. Guests enjoy clean, safe, World Health Organisation standard drinking water straight from the tap.

[Find out more about WaterCap here.](#)



## High Speed Internet

We understand the importance of keeping you connected. Whether that's ensuring that Skype and Zoom Calls to family are uninterrupted, that video conference calls go smoothly, or that you are able to enjoy online gaming, Netflix or YouTube in your leisure time – our high speed internet and dedicated IT team, has you covered.

## Always-On Power

Chelsea Village has solar-powered energy solutions supported by multiple onsite generators. This guarantees that our guests remain connected with the outside world and are never left in the dark.

# Recreation, Fitness & Wellbeing

The concept of health and wellness is an important part of the Chelsea Village ethos which is why you will find a choice of recreational and fitness areas throughout the camp.



- **GYMCAP:** guests have access to this high-tech, modern container gym that is especially built for remote environments to ISO standards. It includes the same equipment found at Manchester United and other premier rugby and football clubs in the UK, and includes a spinning room, rowing machines, cross trainers, Ski erg and more.
- **RUNNING GYM:** you'll find these state-of-the-art treadmills located under the 'pirate ship'.
- **COASTAL RUNNING OR WALKING TRAIL:** enjoy an 8km coastal walk or run within the AAIA. Please note that the ocean with its dangerous currents, high swells and sharks are not suitable for swimming. Even rock pools should be enjoyed with caution and only under safe conditions.



# Office Space

We are committed to supporting your business and operational goals by providing a variety of options when it comes to secure office space and video conferencing facilities. Whether these are container conversions, concrete builds or customised designs, you can be assured of 'business as usual' at Chelsea Village.



“Chelsea Village works closely with clients to fully understand their office requirement. The COG team delivers bespoke builds; this ensures the best possible solution for our clients and a happy long-term solution working in Somalia for everyone.”

# Construction

Chelsea Village was created by Camp Operating Group (COG), who began the design and build of the camp with zero infrastructure in 2015. We have the following capabilities in terms of construction for clients as well as neighbouring organisations within both the AAIA and city.

- SafeCap mobile safe rooms / bunkers
- Concrete buildings to UNDSS MOSS standards
- Light gauge steel builds
- Flat pack accommodation
- Safe rooms / bunkers
- Block paving, interlock paving



To reduce in-country build-time of the traditional Safe Room/Bunker construction in a conflict setting, COG developed a bespoke 10mm thick steel-enclosed (walls, floor & roof) Safe Room/Bunker, known as SafeCap which is supplied complete as a plug and play, drop-in unit.

Find out more about SafeCap [here](#).



These are the clients Chelsea Vilage has been honoured to support

GOVERNMENT DIPLOMATIC  
AND DEFENCE

GOVERNMENT OF THE  
UNITED STATES



GOVERNMENT  
DIPLOMATIC



Embassy of Egypt



Committed to Good



GOVERNMENT  
DIPLOMATIC



# Hospital On Site

To have a hospital that offers quality medical care within the safe confines of Chelsea Village is not only unusual but the peace-of-mind factor it offers is invaluable.

## FOR MORE INFORMATION, CONTACT:

Diplomatic Medical Solutions, Chelsea Village, (AAIA)

Call: +252 616 969 698 | + 252 683 014 145

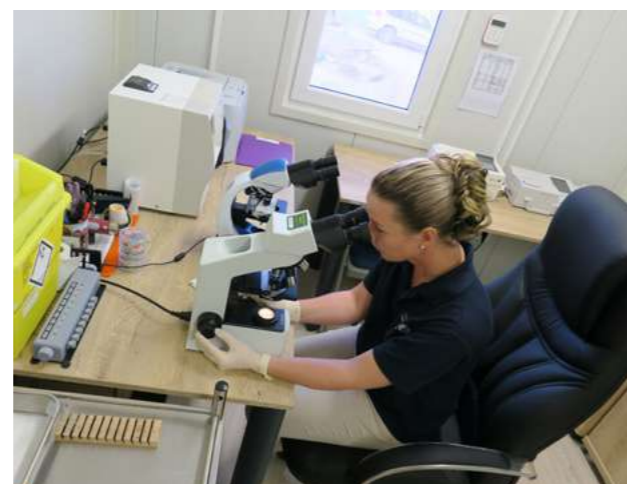
+ 44 23 81881 0700

Email: [dms.mia.somalia@mssteam.net](mailto:dms.mia.somalia@mssteam.net)



Run by Medical Site Services (MSS) the Role 1 and Role 2 facility offers:

- Advanced life support and resuscitation
- Emergency surgery and ICU
- Post-operative treatment and evacuations
- Ambulance and paramedic services
- A dispensing pharmacy
- A clinical laboratory with extensive testing capability
- US/European standard emergency Blood Bank
- General ward admissions
- Digital X-ray and Ultrasound imaging



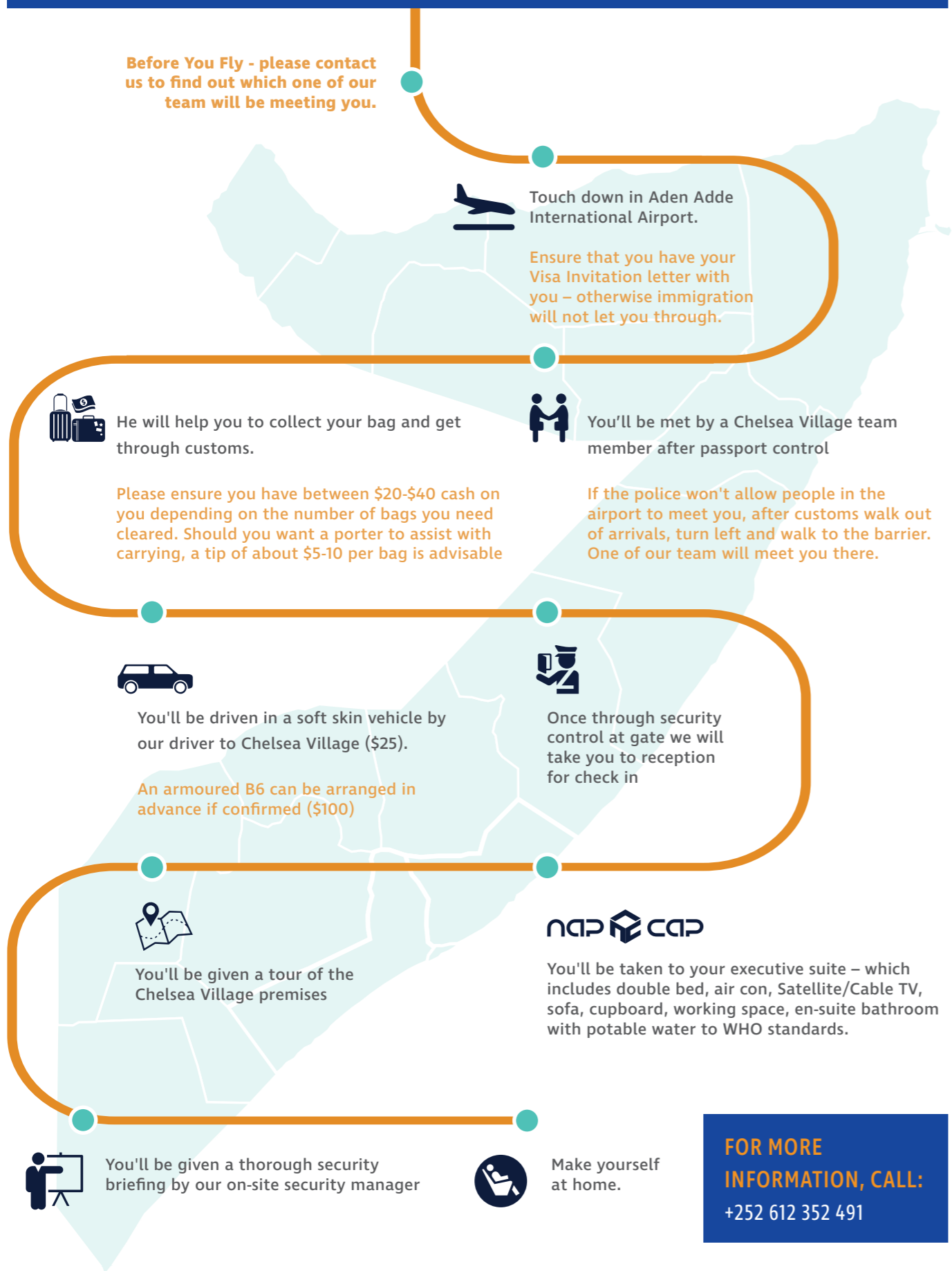
## Meet The Team

At Chelsea Village, we place a high value on the wellbeing of our staff. It is our belief that when our multicultural teams are well looked after, it benefits the entire atmosphere of the camp.

From our reception, housekeeping and restaurant staff, to our IT, security and camp managers, every member of our team are trained not only to provide you with the best possible service, but to ensure that you are looked after like a member of our Chelsea Village family.

“Very impressive staff – always helpful and able to provide solutions. I will continue to bring clients.” – MARCUS P

# On Arrival



# Need to Know

## MONEY MATTERS

- If you are paying for your room in cash it is advisable to bring USD with you in advance. There is a cash point at a Minimarket 500 metres up the road from Chelsea Village but it is advisable to know what your daily limit is.
- Payment terms:** We prefer cash payments and advise clients to settle at least half of their bill on arrival and the balance when checking out. In emergency cases, you can pay by credit card for a 5% fee for payments over \$500, otherwise 10% for payments less

## DINING AT CHELSEA VILLAGE

BREAKFAST	LUNCH	DINNER	FRIDAY BREAKFAST	SATURDAY BREAKFAST
06:00-07:45	12:00-13:45	18:00-19:45	06:00 - 11:00	06:00 - 10:00
Special dietary requirements, such as allergies, please let us know.				

## MOGADISHU WEATHER

MOGADISHU	JAN	FEB	MAR	APR	MAY	JUN	JUL	AUG	SEP	OCT	NOV	DEC
Min (°C)	23	23	25	26	25	24	23	23	23	24	24	24
Max (°C)	30	30	31	32	31	30	29	29	29	30	31	31
Min (°F)	73	73	77	79	77	75	73	73	73	75	75	75
Max (°F)	86	86	88	90	88	86	84	84	84	86	88	88

Mogadishu is located in the southern part of the east coast of Somalia, just north of the equator. Temperatures are high and stable throughout the year, however, there is an increase between March and May, and a decrease between July and September, which is, albeit slightly, the least hot period, because of the south-east trade winds. Typically the humidity is high, although sea breezes temper the heat.

Rainfall amounts to 430 mm (17 in) per year; the first rainy period is from April to July, then the rains drop and remain infrequent until November.

## WHAT TO WEAR

As most of the population adhere to Islamic beliefs, it is advisable to follow a modest dress code by ensuring that knees and shoulders are covered, especially in public places. Women, in particular, should consider wearing skirts rather than trousers and cover their hair with a scarf.



## The Chelsea Group

Chelsea Village is a Chelsea Group project. This group of companies offers a diverse range of solutions including remote location services, power production, specialist HR for humanitarian and development missions, risk management and leadership development. With a global presence, the Chelsea Group is able to offer clients truly integrated services.

### THE CHELSEA GROUP TEAMS BEHIND CHELSEA VILLAGE:



#### ENIGMA ALLIANCE

Experts in building quality camps in challenging locations through our company COG (Camp Operating Group), which built and manages Chelsea Village. The company also offers a portfolio of products created with remote site operations in mind. From bespoke modular accommodation (NapCap), water purification systems (WaterCap) to modular gyms (GymCap) and Safe Rooms (SafeCap), Enigma Alliance specialises in solutions for remote living and working, offering full camp builds, or individual products. [www.enigma-alliance.com](http://www.enigma-alliance.com)



#### HART NATIONWIDE

Overseeing all security measures at Chelsea Village, Hart is an internationally recognised private security company offering local solutions. Hart Nationwide has been operational in Somalia since 2014, and is excellently placed to deliver security solutions to those enhancing the future of Somalia, providing static and mobile protection of personnel, resources and infrastructure. [www.hartinternational.com](http://www.hartinternational.com)



#### CTG

Providing people solutions to the humanitarian and development community in fragile and conflict-affected countries, CTG specialise in the rapid mobilisation and management of skilled and unskilled personnel. With operational experience in 25 countries, CTG has ongoing projects in Somalia. With offices in Chelsea Village, the CTG team is readily available to support their consultants working in-country – many of whom are also guests at Chelsea Village. [www.ctg.org](http://www.ctg.org)

### SHARED VALUE

As responsible global corporate citizens, the innovative and targeted ways in which the Chelsea Group strives to achieve its goals to meet job creation, socio-economic upliftment and gender equality awareness is varied. As a group, projects include a commitment to the United Nations' Sustainable Development Goals, with a specific focus on women's economic empowerment in conflict-affected regions through CTG's Female First initiative, as well as meaningful and measurable efforts towards the protection and development of vulnerable children and upliftment through sport and education.





## Bookings and Contact Information

### Accommodation:

[bookings@thechelseavillage.com](mailto:bookings@thechelseavillage.com)

### Mobile Security:

[somalia.operations@hartnationwide.com](mailto:somalia.operations@hartnationwide.com)

### Camp Products:

Colin Laubscher  
[colinl@enigma-alliance.com](mailto:colinl@enigma-alliance.com)

T +252 619 74297

### General Manager:

Costa Yiannakis  
[cv.manager@thechelseavillage.com](mailto:cv.manager@thechelseavillage.com)

T +252 612 491897 / T + 265 99 361 2537

### CEO, Enigma Alliance:

Stuart Page  
[stuart.page@enigma-alliance.com](mailto:stuart.page@enigma-alliance.com)

## Follow us



Enigma Alliance

Chelsea Group (RW Holdings Ltd)



@ChelseaVillageMIA



@EnigmaSmartSite